

# People. Forms. Swisspearl.



**SWISSPEARL**

Garden  
2024



# Strengthen identity. Maintain focus.

Our company has undergone some changes since the last issue of the garden catalogue. As part of the takeover of the leading fibre cement manufacturer, Cembrit Holding A/S, by Swisspearl Group AG, which also owned the Eternit companies, all businesses involved will from now on be managed under the joint international umbrella brand of Swisspearl. The standardised name aims to strengthen the identity and focus of our brand worldwide over the long term.

What remains unchanged, however, is our focus on high-quality products for building envelopes, interior design, solar and the garden. Our commitment to quality and sustainability remains unshakeable – you can rely on that.

## We are Swisspearl.

# Strengthen identity.

6

# Planters

15

- 16 Maia
- 18 Hive
- 20 Kolonna
- 21 Aladin
- 22 Kyoto
- 23 Osaka
- 24 Sessanta
- 25 Trenta
- 26 Alto
- 27 Geisha
- 28 Ronco
- 29 Sumo
- 30 Twista
- 31 Samurai
- 32 Bonsai
- 33 Lausanne
- 34 Biasca
- 35 Spindel
- 36 Delta
- 38 Delta 25
- 39 Saucer
- 40 Balconia
- 41 Balconia Reservoir

# Living space

43

- 44 Willy Guhl
- 46 Sponeck
- 48 Trash Cube
- 49 Birdy
- 50 Porto
- 51 Dune
- 52 Cheers
- 53 Ecal
- 54 Hocuspocus
- 55 The Bench

# Colors & surfaces

57

- 58 Naturally beautiful
- 60 Custom Colors
- 61 Standard Colors
- 62 Indoor usage

# Maintenance & Usage

65

- 66 Cleaning
- 69 Planting advices

# People. Shape. Swisspearl.

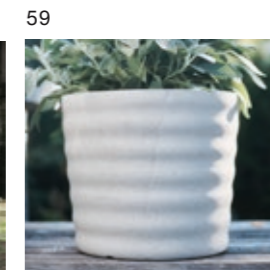
70

# Endlessly happy.

74

# Contact

76



**SWISSPEARL**



# Formability and strength.

Fibre cement material: the perfect combination of aesthetics and functionality.

Fibre cement has been an excellent construction material since the end of the 19th century due to its formability in the wet state and its exceptional strength when dry. And for architects, design pioneers and artists, it is nothing less than pure inspiration.

From Max Bill to Le Corbusier and Haefeli Moser Steiger to Herzog & de Meuron, Rafael Viñoly, Otto Wagner and Morphosis – all of them have used fibre cement as a blank canvas for limitless design possibilities.

The beauty  
lies in the  
simplicity.







# Formed by hand, designed for eternity.

Handwork and traditional craftsmanship are at the centre of our work. We manufacture products that are not only functional but also convey a deep connection to craftsmanship, nature and good design.

We firmly believe that the beauty of an object lies in the traces left by the hands and tools that give it its unique shape. That's why every one of our products – from the mixing ratio to the cutting, forming, impregnation and curing processes – involves a great deal of craftsmanship, passion and skill. Only in this way can we guarantee that each of our elements tells a unique story



# The common theme of your individually formed garden story.

We believe that consistency is the common thread that runs through individually formed garden stories. Our planters and design objects with characteristics such as frost resistance, durability, colour and UV resistance as well as weather resistance and exceptional stability provide the optimum scope for lasting memories and outdoor living. This is where nature is allowed to reveal its uniqueness and changeability – and follow the common theme of your very personal garden story.







# For living spaces.

Nature has always been an inexhaustible source of inspiration. This is especially true when it comes to designing living spaces – both indoors and outdoors. At Swisspearl, we understand the importance of this connection and our garden planters made of natural fibre cement are designed to bring you closer to nature.

As well as being aesthetically appealing, the planters offer greater scope for biodiversity in your garden – creating varied and lively green spaces in which plants, animals and insects can flourish. Create your own personal oasis – be it in the garden itself or on your patio – and experience nature's beauty, power and diversity up close.

## Indoors and outdoors.



# Planters





Design by Michel Charlot

Maia dances to a different rhythm. The slightly wavy, playful surface creates a contrast to our other planters with smooth surfaces. Now also available in three different sizes.

Ø 59 cm × H 50 cm

Ø 47.2 cm × H 40 cm

Ø 35.4 cm × H 30 cm

Natural grey, Anthracite

Expression

Natural

Custom Color



# Maia







Design by Martin Mostböck

Inspired by nature – a planter with an undulating shape that is reminiscent of beehives. Thanks to its volume, Hive offers even large plants enough space to unfold. Hive is available in natural grey and anthracite, but can be ordered in all RAL colours on request.

Ø 100.9 cm × H 88.3 cm

Ø 80 cm × H 70 cm

Ø 63.4 cm × H 55.5 cm

Natural grey, Anthracite

Expression

Natural

Custom Color



# Hive



Design by Martin Mostböck

Inspired by classical antiquity, this planter is a future classic. The slightly corrugated shape is a refreshing evolution of the classic circle, creating an exciting yet harmonious accent in your home. Winner of the Good Design Award 2019. Available in three different sizes.

Ø 61 cm × H 50 cm

Ø 61 cm × H 60 cm

Ø 78 cm × H 70 cm

Natural grey, Anthracite ● ●

Custom Colour ●



# Kolonna

Design by Patrick Schöni

Aladin is the planter for your big plant needs. The two-part design with removable ring simplifies repotting later. A water overflow with water reservoir ensures a long-lasting water supply for the planting.

Ø 112 cm × H 59 cm

Ø 138 cm × H 73 cm

Ø 165 cm × H 87 cm

Anthracite ●

Custom Colour ●

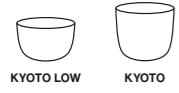


# Aladin



Design by Michel Bruggmann

Elegance combined with classic design - that is the Kyoto planter. Available in 11 different sizes, it skilfully showcases perennials, shrubs and small trees.



Kyoto Low	Kyoto
Ø 44 cm × H 36 cm	Ø 35 cm × H 36 cm
Ø 53 cm × H 40 cm	Ø 44 cm × H 45 cm
Ø 70 cm × H 45 cm	Ø 53 cm × H 55 cm
Ø 90 cm × H 50 cm	Ø 70 cm × H 54 cm
Ø 120 cm × H 65 cm	Ø 90 cm × H 70 cm
	Ø 120 cm × H 90 cm
	Natural grey, Anthracite
	Expression
	Natural
	Custom Colour



# Kyoto

Design by Michel Bruggmann

Strong, robust - and yet light and delicate. The Osaka planter with its rounded corners is available in ten different sizes. The planters offer space for everything from small herb beds on the balcony to flower compositions in the garden.



Osaka	Osaka 106
L 35 cm × B 35 cm × H 36 cm	L 106 cm × B 36 cm × H 36 cm
L 44 cm × B 44 cm × H 45 cm	
L 53 cm × B 53 cm × H 55 cm	<b>Osaka Low</b>
L 70 cm × B 70 cm × H 54 cm	L 44 cm × W 44 cm × H 36 cm
L 90 cm × B 90 cm × H 70 cm	L 53 cm × W 53 cm × H 40 cm
	L 70 cm × W 70 cm × H 45 cm
	L 90 cm × W 90 cm × H 50 cm
Natural grey, Anthracite	
Expression	
Natural	
Custom Colour	



# Osaka



Design by Swisspearl

Sessanta, sixty-six. With a width and height of 66 cm, this planter forms a harmonious square when viewed from the front. Sessanta can be optimally combined with the Trenta planter.

L 66 cm × W 33cm × H 66 cm

Natural grey, Anthracite

Custom Colour



Design by Swisspearl

Trenta, thirty-three. The slender counterpart to Sessanta. Classic, square - this is how the planter presents itself. Versatile in use, it skilfully sets the scene for plants with its simple form.

L 33 cm × W 33 cm × H 66 cm

Natural grey, Anthracite

Custom Colour



# Sessanta

# Trenta



Design by Carmen Humbel and Thomas Geiger

High, round and widening conically upwards - this is how the Alto planter presents itself. It is the perfect vessel for deep-rooted plants such as roses.

Ø 39/26 cm × H 55 cm

Gris naturel, Anthracite

Custom Color



# Alto

Design by Michel Bruggmann

With a height of 65 cm, the tall and narrow design of Geisha with timeless, gentle curves is the ideal planter for deep-rooted plants.

Ø 44 cm × H 65 cm

Natural grey, Anthracite

Expression

Natural

Custom Colour



# Geisha



Design by Savioz Fabrizzi Architectes

With its Mediterranean look and soft shape, the Ronco range of containers creates an atmospheric ambience without being obtrusive. Thanks to the gentle bulge, Ronco offers enough space for large roots and is therefore the ideal planter for larger plants.

Ø 57.2 cm × H 44 cm

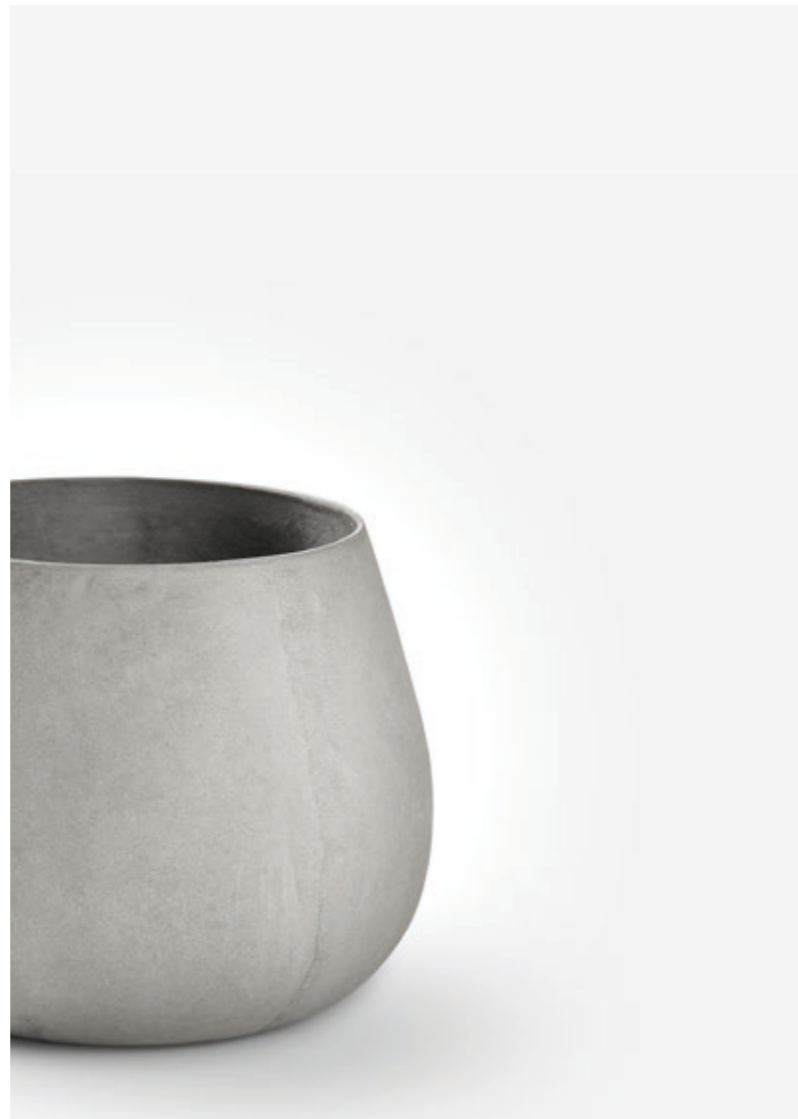
Ø 70.2 cm × H 54 cm

Natural grey, Anthracite

Expression

Natural

Custom Colour



# Ronco

Design by Sternform

Sumo's belly-like shape gives roots plenty of space to grow.

Ø 49.2 cm × H 40 cm

Ø 56.2 cm × H 50 cm

Natural grey, Anthracite

Expression

Natural

Custom Colour



# Sumo



Design by Martin Mostböck

Imagination sets accents. Honoured with the "Red Dot Design Award", Twista's slightly twisted design is a real eye-catcher in the most beautiful terraces and interiors.

L 60 cm × W 30 cm × H 60 cm

Natural grey, Anthracite

Custom Colour



# Twista

Design by Michel Bruggmann

Samurai is a tall, slim planter that is perfect for deep-rooting plants such as roses and rosemary. Samurai planters make a particularly effective statement at the entrance of hotels and restaurants.

L 44 cm × W 44 cm × H 65 cm

Natural grey, Anthracite

Expression

Natural

Custom Colour



# Samurai



Design by Patrick Schöni

Bonsai is a planter that is very large in diameter and elegantly showcases large plants and even smaller trees with its round, flat shape.

Ø 112 cm × H 40 cm

Ø 138 cm × H 50 cm

Ø 165 cm × H 60 cm

Anthracite

Custom Colour



# Bonsai

Design by Swisspearl

Lausanne is our flat, harmoniously round planter. The wide base and the low height ensure high stability.

Ø 70 cm × H 23 cm

Ø 90 cm × H 30 cm

Natural grey, Anthracite

Custom Colour



# Lausanne



Design by Willy Guhl

The Biasca planter, also called Elephant's Ear, captivates with its organically inspired form. It received the "Good Form" award from the Swiss Werkbund in 1952. Today it is one of the Swiss design classics.

Ø 93 cm × H 32 cm

Natural grey

Custom Colour



# Biasca

Design by ZHdK  
in cooperation with Willy Guhl

Spindel, also known as the Diabolo, is simply masterful with its shape that tapers in the middle. This piece can be used as an iconic planter, or alternatively as an indoor sculpture. Available in two different sizes.

Ø 37 cm × H 60 cm

Ø 56 cm × H 92 cm

Natural grey

Custom Colour



# Spindel



Design by Swisspearl

Rectangular, square or round. Delta is available in many different shapes and sizes - to suit your individual requirements. Set accents with different shapes and colours.

<b>Delta 35</b>	L 100 cm × W 45 cm × H 45 cm	L 80 cm × W 55 cm × H 60 cm
L 80 cm × W 30 cm × H 35 cm	L 120 cm × W 45 cm × H 45 cm	L 100 cm × W 55 cm × H 60 cm
L 100 cm × W 30 cm × H 35 cm	L 140 cm × W 45 cm × H 45 cm	L 120 cm × W 55 cm × H 60 cm
<b>Delta 45</b>	Ø 50 cm × H 45 cm	L 140 cm × W 55 cm × H 60 cm
L 45 cm × W 45 cm × H 45 cm	Ø 75 cm × H 45 cm	Ø 75 cm × H 60 cm
L 60 cm × W 60 cm × H 45 cm	Ø 100 cm × H 45 cm	Ø 100 cm × H 60 cm
L 80 cm × W 80 cm × H 45 cm	<b>Delta 60</b>	Natural grey, Anthracite ●●
L 100 cm × W 100 cm × H 45 cm	L 60 cm × W 60 cm × H 60 cm	Custom Colour ●●●
L 60 cm × W 45 cm × H 45 cm	L 80 cm × W 80 cm × H 60 cm	
L 80 cm × W 45 cm × H 45 cm	L 100 cm × W 100 cm × H 60 cm	



# Delta





Design by Swisspearl

Delta 25's small size makes it ideal for urban gardening in limited spaces. The elongated design provides excellent protection against frost, allowing flowers, herbs and vegetables to thrive.

#### Delta 25

L 80 cm × W 25 cm × H 25 cm

L 100 cm × W 25 cm × H 25 cm

#### Delta 25 Saucer

L 83 cm × W 28 cm × H 6 cm

L 103 cm × W 28 cm × H 6 cm

White, Anthracite

Design by Swisspearl

Round or square. The frost-resistant trays make watering the plants much easier and protect the substrate from getting wet and dirty. Thanks to an optional interior coating, the indoor use is possible without any problems.

#### Square

L 30 cm × W 30 cm × H 4,5 cm

L 40 cm × W 40 cm × H 5 cm

L 45 cm × W 45 cm × H 5 cm

L 62,5 cm × W 62,5 cm × H 5 cm

#### Round

Ø 30 cm × H 4,5 cm

Ø 35 cm × H 4,5 cm

Ø 40 cm × H 5 cm

Ø 46 cm × H 5 cm

Ø 52 cm × H 5 cm

Ø 62,5 cm × H 5 cm

Natural grey, Anthracite



# Delta 25

# Saucer



Design by Swisspearl

Timeless design that resists frost and gives flowers and herbs a new home. Made of breathable and moisture-regulating fibre cement, our Balconian "Swisspearl" model is particularly suitable for urban gardening, as they defy wind and weather.

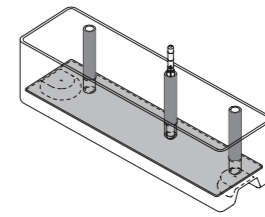
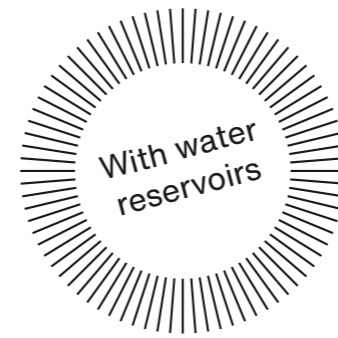
Balconia	Balconia Decor
L 40 cm × W 17 cm × H 17 cm	L 40 cm × W 17 cm × H 17 cm
L 60 cm × W 17 cm × H 17 cm	L 60 cm × W 17 cm × H 17 cm
L 80 cm × W 17 cm × H 17 cm	L 80 cm × W 17 cm × H 17 cm
L 100 cm × W 17 cm × H 17 cm	L 100 cm × W 17 cm × H 17 cm
Balconia Saucer	White, Anthracite <input type="radio"/> <input checked="" type="radio"/>
L 43 cm × W 20 cm × H 3 cm	
L 63 cm × W 20 cm × H 3 cm	
L 83 cm × W 20 cm × H 3 cm	



# Balconia

Design by Swisspearl

Compact design with integrated water reservoir - perfect for balconies and terraces. The well thought-out structure made of robust fibre cement, clay pipes and a water level indicator enables convenient watering of flowers and herbs.



Balconia Reservoir
L 60 cm × W 17 cm × H 20 cm
White <input type="radio"/>



# Reservoir



# Habitat





# Willy Guhl as a visionary

Willy Guhl is one of the most important Swiss designers and can be considered a pioneer of modern industrial design. His interest in industrial manufacturing and new production methods brought him into contact with industry time and again - including us, the inventors of fibre cement. During our collaboration, numerous, outstanding designs were created, such as the Biasca plant container - also known as the "Elephant Ear" (page 43) - or the legendary "Loop Chair" beach chair from 1954, which is now one of the design icons of the 20th century.

Design by Willy Guhl

In 1954, the designer Willy Guhl created a design icon with a fibre cement panel joined to form an endless loop. The sculptural armchair, also known as the Loop Chair, impresses with its simplicity and classic elegance.

It is matched by the side table with two round openings that serve as bottle holders.

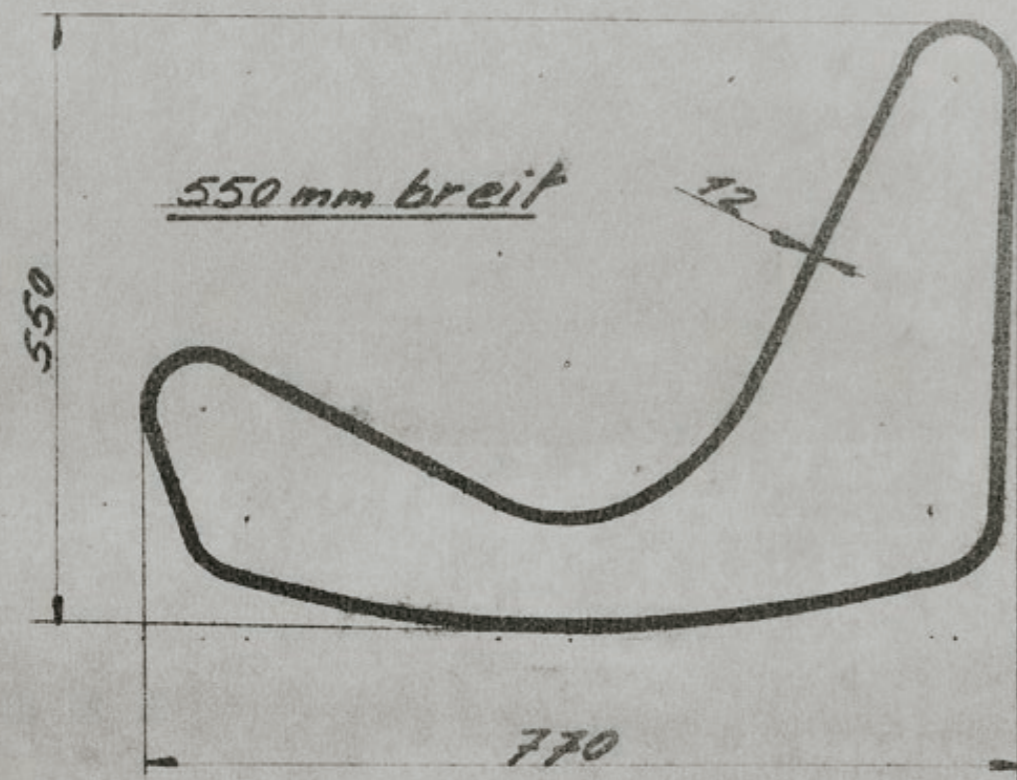
## Chair

L 79 cm × W 54 cm × H 61 cm

## Table

L 72 cm × W 40 cm × H 22 cm

Natural grey



While others were using fibre cement panels for architectural design, Guhl was fascinated by the malleability of the material, which had not yet dried out, with its low thickness and subsequent stability. With his first designs, he laid the foundation for today's Garden Collection.

# Guhl Chair



Design by Julia von Sponeck

Designer Julia von Sponeck has abandoned the classic loop shape for the armchair and worked with two fibre cement panels lying on top of each other. This creates a dynamic, ergonomically sophisticated shape that is particularly comfortable to sit on. With the matching side table, the result is a beautifully shaped chair and table ensemble.

**Chair**

L 77.5 cm × W 50 cm × H 60 cm

**Table**

L 50 cm × W 50 cm × H 25 cm

Natural grey ●



# Sponeck





Design by Nicolas le Moigne

Waste is generated at the Swisspearl factory during the production of various garden and design pieces. This waste finds a new life in the Trash Cube. Offcuts and leftover material are reshaped to form a stool or side table. The different pieces of waste used make each Trash Cube truly unique.

L 31 cm × W 31 cm × H 36 cm

Natural grey



# Trash Cube

Design by Vladimir Jaccard

The Birdy nesting box can provide cavity-nesting birds a protected place to raise their young. Swisspearl fibre cement also provides the right conditions for this. It is not only weatherproof and waterproof, but also breathable and moisture-regulating.

L 20.5 cm × W 16 cm × H 21 cm

Natural grey



# Birdy



Design by Michel Charlot

The design of the Porto trio - table, side table and stool - impresses with a concise design language and maximum reduction. The trio not only looks good outdoors - Porto also makes a strong statement indoors.

---

**Table**


---

Ø 71 cm × H 23 cm

---

**Side Table**


---

Ø 46 cm × H 23 cm

---

**Stool**


---

Ø 36 cm × H 42 cm

---

Natural grey

---

Design by Rainer Mutsch

The Dune lounge chair consists of four elements that can be arranged as individual pieces or combined. With its rounded, soft edges, the Dune design by Rainer Mutsch creates an exciting 3D effect.

---

**Left, Right, Middle**


---

L 96 cm × W 95 cm × H 60 cm

---

**Table**


---

L 96 cm × W 89 cm × H 36 cm

---

Anthracite, Titan

---



# Porto

# Dune



Design by Thing Design

The design of the multifunctional Cheers shelving system pays homage to the famous Swisspearl wave. Originally designed to store wine bottles, you can store anything from logs to towels in it.

L 37.5 cm × W 25 cm × H 30.5 cm

Natural grey ●



# Cheers

Design by Nicolas Le Moigne

Inspired by the malleability of fibre cement, designer and lecturer Nicolas Le Moigne designed these elegant and resilient masterpieces with his students. The central fold gives the objects stability while ensuring a certain lightness. Unlike all other hand-molded products, the Ecal line is molded from the outside, allowing an unadulterated view of the craftsmanship

**Chair**

L 44 cm × W 32 cm × H 44 cm

**Table**

L 70 cm × W 49 cm × H 27 cm

Natural grey ●



# Ecal



Design by Kevin Fries and Jakob Zumbühl

A fibre cement slab draped like a tablecloth: the incredible stability of hardened fibre cement allowed the designers to add a touch of magic to their design. The side table is stable even without a frame and seems to float in the air.

Ø 45 cm × H 43 cm

Ø 58 cm × H 36 cm

Natural grey ●



# Hocuspocus

Design by Michel Bruggmann

The Bench by industrial designer Michel Bruggmann invites you to rest and pause in style. With its simple design, gently rounded corners and smooth surface, it blends into any environment - indoors and outdoors.

Dimensions per element

L 160 cm × B 45 cm × H 46 cm

Anthracite ●



# The Bench





# Colors and surfaces.



# Naturally beautiful.



Working with and in nature also means being open to the traces of change and transformation and learning to appreciate them. Time can also change our natural grey garden pots and furniture.

Fine works of art in the form of a soft patina give the products a unique and lively character. Move with the times and discover the natural beauty of our natural grey garden pots and furniture.





# Custom Colours

Colours that match the individual design?  
It's no problem with Custom Colours by Swisspearl.

## Custom Colours

Plant pots in the company colours? A specific colour concept for the design of gardens, terraces and public outdoor spaces? Fancy individual splashes of colour in the outdoor area? Our custom colours range from classic anthracite to opaque colours and soft tones in a wide selection of RAL and NCS colours.

## Classic

In addition to the raw, untreated natural gray, the classic anthracite complements our standard color palette. The texture of the fibre cement is gracefully accentuated to add a touch of simplicity and elegance to every garden and terrace.

ANTHRACITE

## Natural

Three soft shades - Jade, Slate and Granite - bring out the fibre cement structure beautifully despite their colourfulness. The three Natural Colours have a subtle yet modern effect and deservedly allow the plants to shine.

JADE

SLATE

GRANITE

## Expression

With our Expression Colours, we offer five expressive earth tones that blend in perfectly with the surroundings. The matt glaze beautifully sets off the rough feel of the natural fibre cement and accentuates every plant well.

BROWN

GREY

WHITE

ORANGE

BLACK

# Standard Colours



**Design collaboration  
with Creaplant for  
Airport Zurich AG**

With "The Circle", a small city has been created at Zurich Airport. Here, office space, hotels and shopping are combined with culture and gastronomy. For this project, Swisspearl produced 663 custom-made planters in collaboration with Creaplant.

# Indoor usage

Interior planting brings nature indoors and integrates it as part of the interior design. Plants in the workplace, in private areas or in public buildings help to create more inviting spaces. Natural materials and plants have a proven positive effect on our health and wellbeing.



Our planters can be customised to suit individual requirements and indoor applications. At the customer's request, our planters can be supplied completely watertight thanks to a durable inner coating and a closed bottom hole.





# Maintenance and usage.



# Cleaning

## Natural patina

The natural components of Swisspearl fibre cement ensure that microorganisms or spore plants such as algae or moss feel at home on the natural surface. This creates an almost artistic patina over time. However, deposits or efflorescence can be easily cleaned with the help of the following cleaning instructions.

## Cleaning agents

Cleaning vinegar (9.5%) or a strong descaling agent (e.g. Durgol Forte). If necessary, a hand brush can be used for cleaning. To avoid damaging the material, the use of high-pressure or industrial cleaners should be avoided during cleaning. The suitability should first be tested on an inconspicuous area.

## Cleaning of coated products

Treat the contaminated area or light lime efflorescence with plaster vinegar or a strong decalcifying agent and rinse with plenty of water. Make sure that vinegar cleaner does not get on bare metal parts and does not dry up. Cleaning should not be carried out with hot water and not on heated and sunlit surfaces.

## Cleaning of natural grey products

Slight lime efflorescence on natural grey products will be specifically removed by the weather over time. Contamination on uncoated objects should always be cleaned over the entire surface and not partially, as possible colour differences may occur.







#### Irrigation

Fibre cement is a breathable material that automatically regulates humidity. All planters have drainage openings at the bottom that must not be blocked so that water can run off and not freeze in winter. A clay shard is a proven and simple aid for this. Place it over the drainage hole. Some large pots also have a water reservoir and overflow, which significantly reduces the frequency of watering.

#### Perfect layering

To prevent waterlogging, first fill one third of the planter with expanded clay or coarse river pebbles. Then place a water-permeable fleece mat and place the plants on top of this. Then fill the planter with soil. Keep a rim of about 5 cm free to prevent the water from overflowing.

#### Ideal location

Choose a suitable spot for each plant with the right light and temperature conditions and a level base. Indoor planters are best placed on saucers so that overflowing water cannot damage the soil.

#### Repotting

Every few years a plant needs fresh soil, ideally in spring. To do this, remove the plant and its root system from the container, remove the old soil and fill in with fresh soil.

#### Cold protection

Due to the high final volume of the planters, the roots of the plants are well protected against frost. If you want to protect the planters additionally in winter, use a fleece or natural materials, never plastic, as this can form permanent white spots.

# Planting advice



# People. Shape. Swisspearl.



**Martin Mostböck**

Martin Mostböck has received numerous national and international awards and nominations for his work. His works and designs have been shown in countless exhibitions throughout Europe, Asia, the Middle East, North America and Australia and belong to the most renowned museum collections in the world, such as the Museum of Arts and Design/New York.



**Michel Bruggmann**

Michel Bruggmann works as an architect and industrial designer in the Eicherbruggmann office in Basel, which was founded in 1999. By using proven materials in a new context, Eicher and Bruggmann create innovative products and architecture. Well thought-out concepts break through common thought patterns and provide versatile and novel possibilities for use.



**Humbel und Geiger**

Carmen Humbel and Thomas Geiger, both graduate architects ETH/SIA from Zurich. Humbel worked at the Architecture Museum in Basel as well as at the Architecture Forum Zürich as managing director. Geiger previously spent four years at Santiago Calatraca and is a founding partner of Arndt Geiger Herrmann AG in Zurich.



**Patrick Schöni**

Patrick Schöni is a graduate engineer in horticulture HTL/FH and was the co-owner of the Gardens Gesaemtloesungs GmbH planning office until 2019. As a lecturer and expert, he now lectures at various educational institutions for professional development in the subjects of design, garden planning and plant use



**Fries and Zumbühl**

Kevin Fries and Jakob Zumbühl have been designing and bringing various design products to life since 2003. They have received various awards such as the Reddot Design Award for the Tetris designer frame for Swisspearl and much more.



**Michel Charlot**

After graduating from ECAL / School of Art and Design in Lausanne, the Swiss industrial designer worked for Jasper Morrison Ltd. Since 2011 he has been an independent product developer for companies such as Swisspearl, Vitra and Kettal. Since January 2013, he has been teaching industrial design at ECAL/Hochschule für Kunst und Design Lausanne in Switzerland and at Tama Art University in Tokyo, Japan.

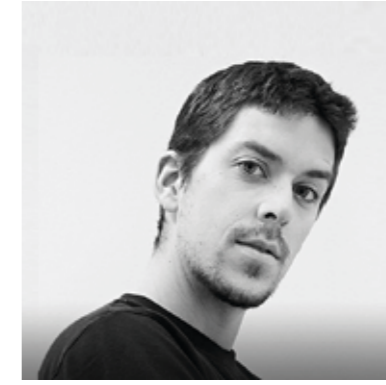


**Thing Design**

Thingdesign consists of Cédric Facchin (Dipl. Designer FH), Marco di Paolo (Dipl. Innenarchitekt FH) and Michael Abegg (Hochbauzeichner / Möbelschreiner). Since 2009 the three dynamic young Swiss designers form a team and create together innovative lifestyle products for international design companies.



Hardly any other material offers as many creative possibilities as fibre cement. Maximum design flexibility, the material's purity and authenticity as well its incomparable, beautiful feel give plant pots and design objects made of Swisspearl fibre cement their unique, tactile appearance. It is no coincidence that a growing number of designers are creating unique objects using fibre cement for a stylish finish



**Vladimir Jaccard**

Vladimir Jaccard studied at the ECAL in Lausanne and is co-founder of the office JALE-Design in the Lausanne region. He has worked for Swiss Watch Company in the fields of instruments and timekeeping, among others.



**Julia von Sponeck**

Julia von Sponeck studied architecture and design at the Stuttgart Art Academy and the University of North London between 1992 and 2000. She worked for several years as an architect and designer for internationally renowned offices in London and Berlin. currently working at Hermes International as an architect.



**Rainer Mutsch**

Rainer Mutsch studied furniture design at Denmark's Design Skole Copenhagen, product design at the Berlin University of the Arts and completed his studies in Industrial Design (Prof. Paolo Piva) at the University of Applied Arts Vienna. Rainer Mutsch then worked as a designer with Werner Aisslinger in Berlin before opening his own design studio in Vienna in 2008, focusing on product design.



**Willy Guhl**

After completing his apprenticeship as a cabinetmaker, he studied at the School of Applied Arts in Zurich, where he later worked as a lecturer and director himself. In 1939 he founded his own studio in Zurich. Guhl was a co-founder of the Association of Swiss Interior Designers and the Association of Swiss Industrial Designers. He developed products for renowned companies such as Dietiker + Co, Aebi and Swisspearl Schweiz AG.



**Savioz Fabrizzi**

Savioz Fabrizzi Architectes, based in Sion, always seek the balance between spatiality and the expression of materials. In doing so, they reveal the intrinsic qualities of a building and a built heritage



**Nicolas Le Moigne**

Nicolas Le Moigne already designed objects during his studies at ECAL, with which he was able to celebrate his first great successes. In 2007 he opened his own design studio in Lausanne. For over 15 years he has been teaching at ECAL in Lausanne as Head of Master in Design for Luxury & Craftmanship.



**Sternform**

Andrea Grossfuss studied industrial design in Hamburg and Olaf Kiessling studied product design in Stuttgart. In 2003 they jointly founded the office Sternform Produktgestaltung. They specialise in the design of furniture and accessories.



# Endlessly

We don't just design space - we design our future. With a durable, natural, extremely malleable material that makes anything possible. Your ideas and our future. Join us. Enjoy the design, the moment, nature. After all, there is room for infinite joy in a lifetime.

happy.







**Swisspearl Schweiz AG**

Eternitstrasse 3  
8867 Niederurnen  
Schweiz  
+41 55 617 11 11  
[info@ch.swisspearl.com](mailto:info@ch.swisspearl.com)

[swisspearl.com](http://swisspearl.com)

